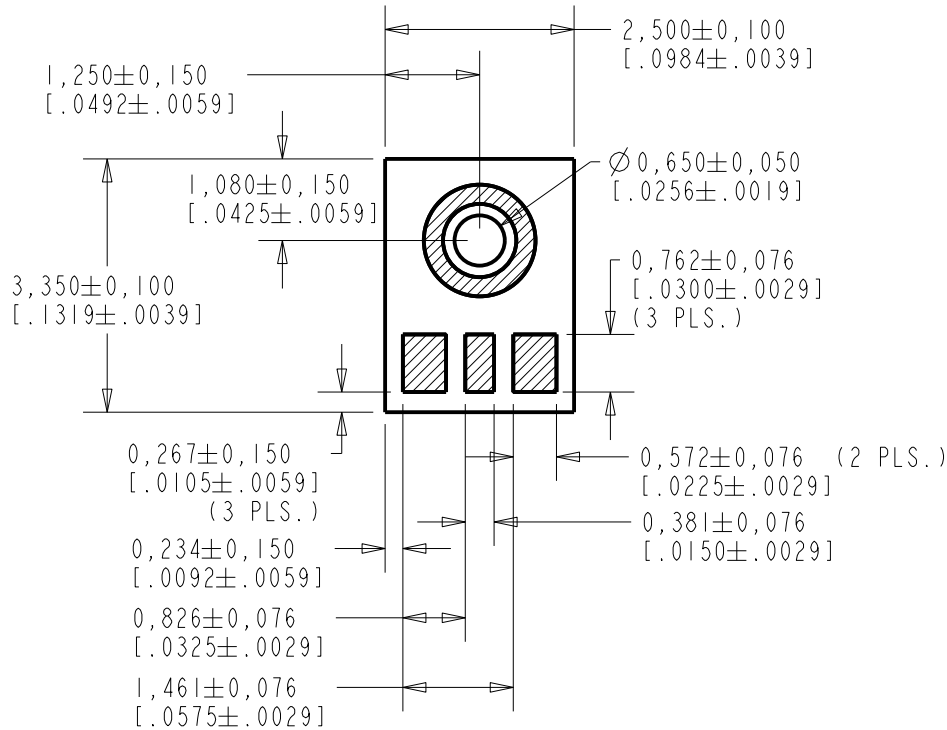


MOM-32325-B66

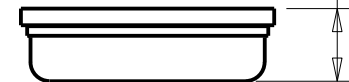
SHT 1.1



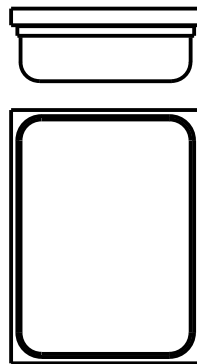
NOTES:

1. DO NOT PULL A VACUUM OR APPLY AIR PRESSURE OVER THE PORT HOLE OF THE MICROPHONE. PULLING A VACUUM OR APPLYING AIR PRESSURE OVER THE PORT HOLE CAN DAMAGE THE DEVICE.
2. DO NOT INSERT ANY OBJECT IN PORT HOLE OF DEVICE AT ANY TIME AS THIS CAN DAMAGE THE DEVICE.
3. RECOMMEND NO MORE THAN 3 REFLOW CYCLES.

0,960±0,100
[.0378±.0039]



NOMINAL WEIGHT
.020 GRAMS



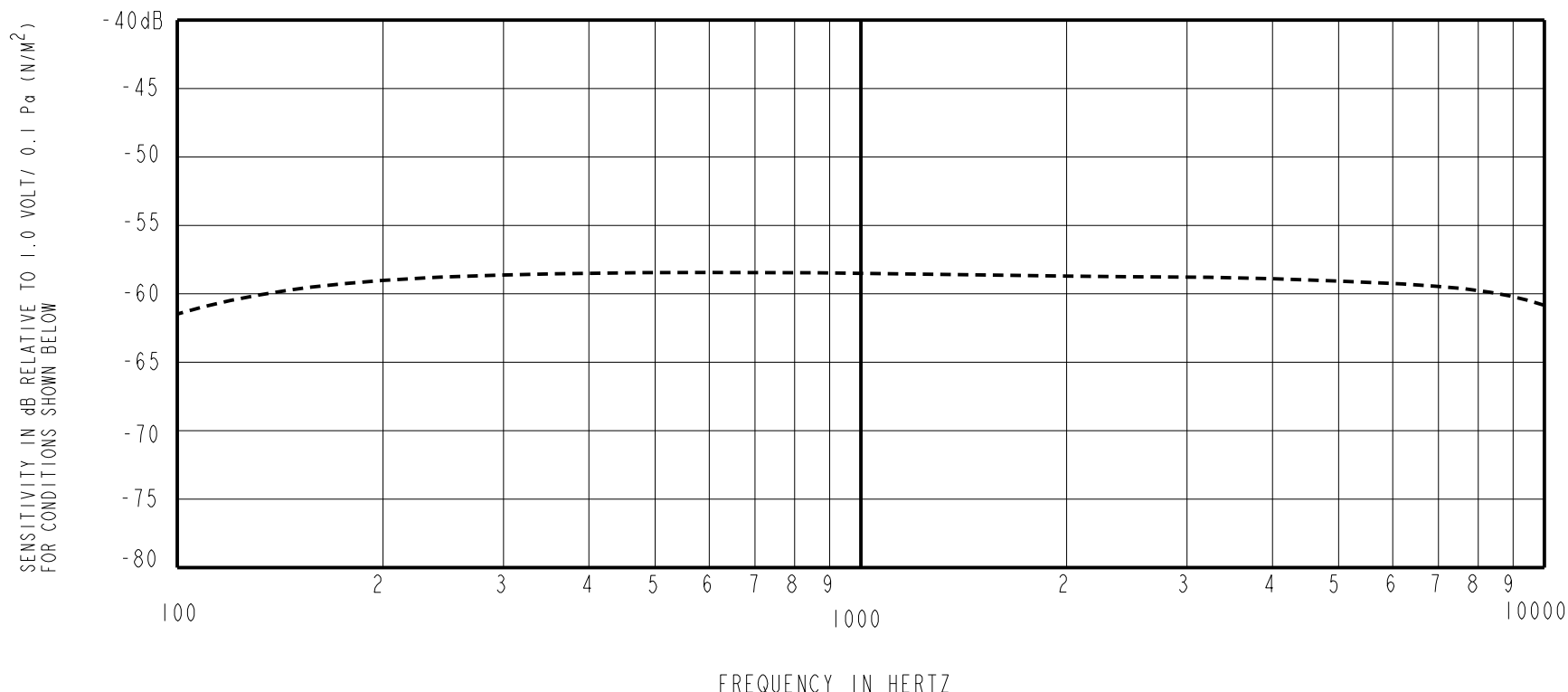
DIMENSIONS IN MILLIMETERS [INCHES]

KNOWLES ELECTRONICS
ITASCA, ILLINOIS U.S.A.

Revision	C.O. #	Implementation Date	RELEASE LEVEL	REVISION
B	MI0106093	6-3-15	Active	B
A	MI0105738	9-23-14		

SCALE: 10:1		DR. BY	DATE
DO NOT SCALE DRAWING		SSUN	9-23-14
TITLE: MICROPHONE		CK. BY	DATE
MOM-32325-B66		GJP	9-24-14
OUTLINE DRAWING		APP. BY	DATE
SHT 1.1		GJP	9-24-14

TYPICAL SENSITIVITY

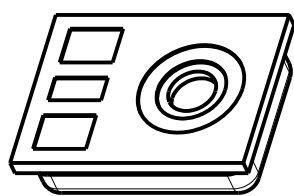


SENSITIVITY MEASURED IN A PRESSURE CAVITY UNDER THE NOMINAL CONDITIONS SHOWN BELOW

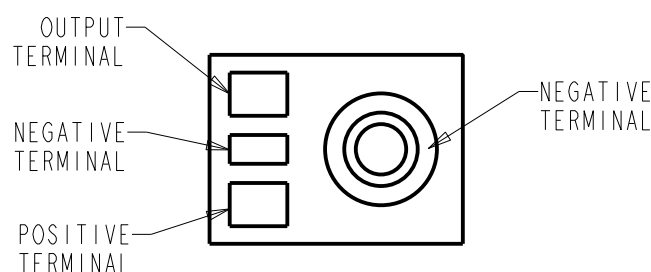
POWER REQUIREMENT					
PARAMETER	UNIT	MINIMUM	NOMINAL	MAXIMUM	REMARKS
SUPPLY VOLTAGE RANGE	VDC	0.9	0.9	1.3	OPERATING

PERFORMANCE						
PARAMETERS		UNIT	MINIMUM	NOMINAL	MAXIMUM	REMARKS
SENSITIVITY	100 Hz	dB	-4.5	-2.5	-0.5	re SENSITIVITY AT 1 kHz
	1000 Hz	dB	-61.5	-58.5	-55.5	dB re 1V/0.1Pa
	10 kHz	dB	-5.0	-2.0	+1.0	re SENSITIVITY AT 1 kHz
CURRENT DRAIN		µA	-	28	39	-
A-WEIGHTED NOISE		dB SPL	-	26.5	30	INPUT REFERRED NOISE re SENSITIVITY AT 1kHz
OUTPUT IMPEDANCE		Ohms	3200	4450	5700	-

- NOTES: 1. REFLOWED CUP CONNECTED TO NEGATIVE TERMINAL.
 2. PERFORMANCE PARAMETERS ARE VALID AT 0.9 VDC. TYPICAL TEST ENVIRONMENT: 50% RH, 21°C (70°F)
 3. SETTLE VL SPEC RANGES FROM 0.53 TO 0.67 AT 0.9 VDC BY DESIGN.



PORT LOCATION: 12JPn



TERMINAL DEFINITION

Revision	C.O. #	Implementation Date	RELEASE LEVEL	REVISION
B	MI0106093	6-3-15	Active	B
A	MI0105738	9-23-14		

KNOWLES ELECTRONICS
 ITASCA, ILLINOIS U.S.A.

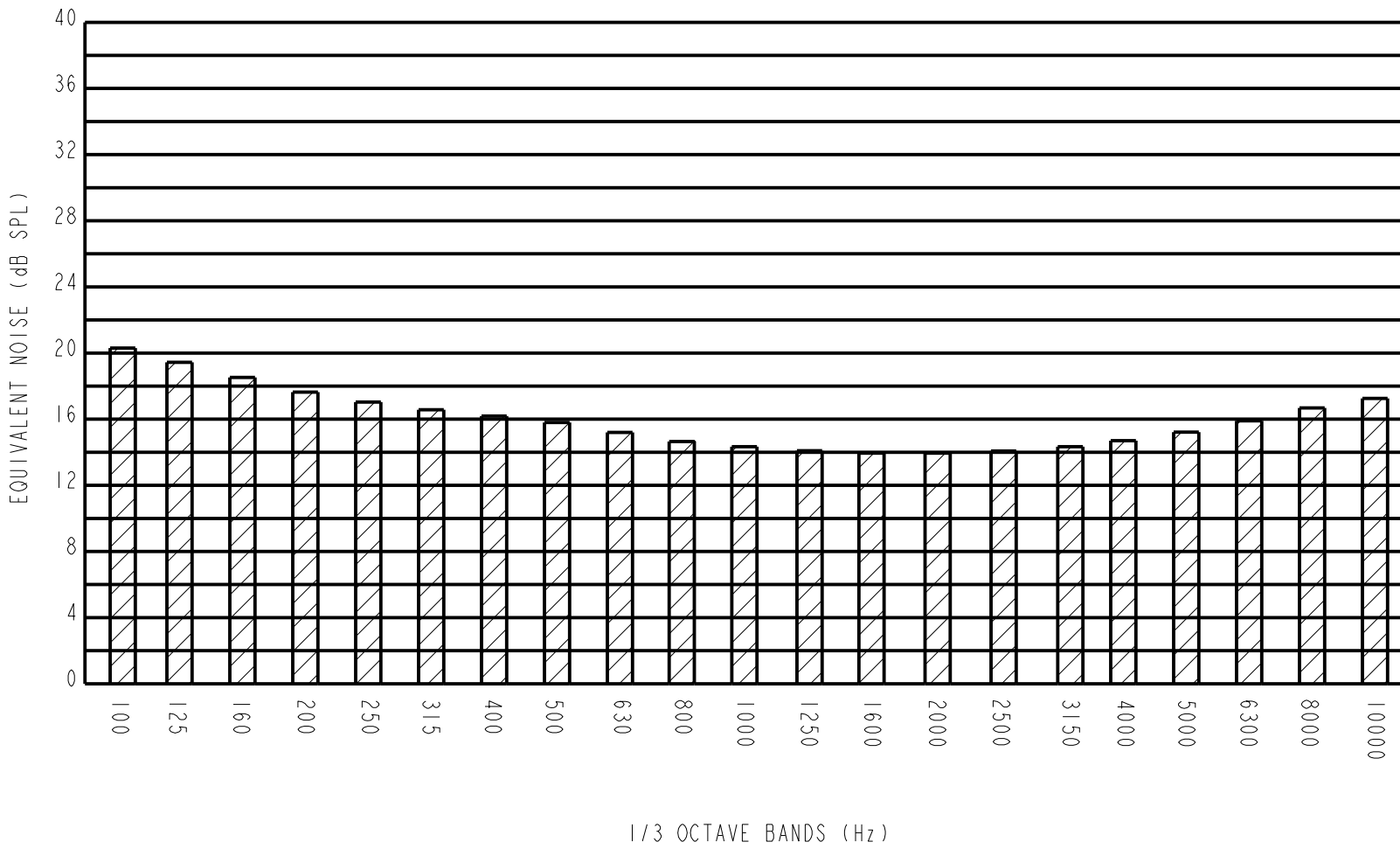
WHEN TEST LIMITS ARE USED TO ESTABLISH INCOMING INSPECTION ACCEPTANCE/REJECTION CRITERIA, CORRELATION OF TEST EQUIPMENT WITH KNOWLES IS ALSO REQUIRED FOR ELIMINATION OF EQUIPMENT AND TEST METHOD VARIATION

TITLE: **MICROPHONE**
 PERFORMANCE SPECIFICATION

MOM-32325-B66
 SHT 2.1

DR. BY	DATE
SSUN	9-23-14
CK. BY	DATE
GJP	9-24-14
APP. BY	DATE
GJP	9-24-14

A) 1/3 OCTAVE INPUT REFERRED NOISE



B) PERFORMANCE

		PERFORMANCE				
PARAMETERS		UNIT	MINIMUM	TYPICAL	MAXIMUM	REMARKS
POWER SUPPLY REJECTION RATIO (PSRR)	1000 Hz	dB	-	-42	-18	SUPPLY VOLTAGE @ 0.9 VDC
				-	-	SUPPLY VOLTAGE @ 1.3 VDC
INPUT REFERRED VIBRATION SENSITIVITY	1000 Hz	dB SPL	-	54	60	BLOCKED PORT; 1g ACCELERATION
HUMIDITY COEFFICIENT	1000 Hz	dB		0.0		PER %RH
TEMPERATURE RANGE	OPERATION	°C (°F)	0 (32)	-	63 (145)	CELSIUS (FAHRENHEIT)
	STORAGE	°C (°F)	-40 (-40)	-	100 (212)	CELSIUS (FAHRENHEIT)
ESD TOLERANCE	MIL-STD-750 CLASS 2 RATING EOS/ESD-S5.1-1993 CLASS 2 RATING					

Revision	C.O. #	Implementation Date	RELEASE LEVEL	REVISION
B	MI0106093	6-3-15	Active	B
A	MI0105738	9-23-14		

KNOWLES ELECTRONICS
ITASCA, ILLINOIS U.S.A.

WHEN TEST LIMITS ARE USED TO ESTABLISH INCOMING INSPECTION ACCEPTANCE/REJECTION CRITERIA, CORRELATION OF TEST EQUIPMENT WITH KNOWLES IS ALSO REQUIRED FOR ELIMINATION OF EQUIPMENT AND TEST METHOD VARIATION

TITLE: **MICROPHONE**
PERFORMANCE SPECIFICATION

MM-32325-B66
SHT 2.2

DR. BY	DATE
SSUN	9-23-14
CK. BY	DATE
GJP	9-24-14
APP. BY	DATE
GJP	9-24-14